

## Pusher Ram Linear Guides - Lubrication

### **CATEGORY:** Information for Factory Implementation

**Summary:** Continued reliability of the Pusher Ram Linear Guides will depend on annual replenishment of lubricant, using only the correct type of grease. Care must be taken to prevent ingress of dirt or other particles

#### **Linear Guides without a Grease Nipple**

Use Mobil - Mobilgrease XHP 222 or an equivalent viscosity 2 Lithium based grease.

To apply the grease:

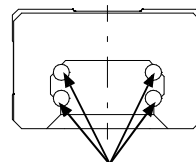
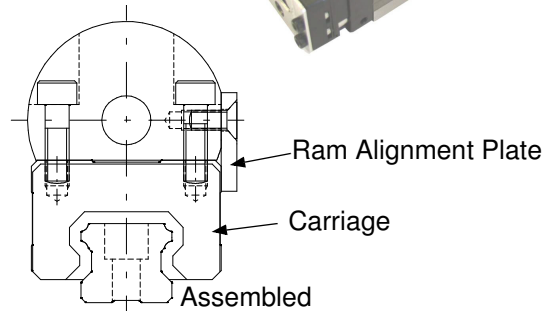
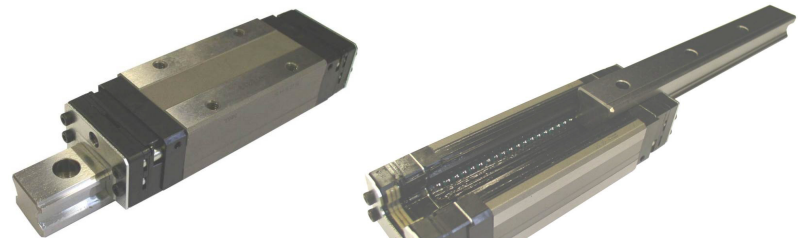
First remove the Pusher Ram from the Carriage then carefully separate the Carriage from the Rail.

Although the Balls of the Bearing are held in place with a Linear 'Cage', care must be taken not to dislodge the Balls.

Apply 1.6cc (cubic centimetres) of grease directly to the Balls of the Carriage

Care must be taken when replacing the Carriage on the Rail.

The Pusher Ram must be carefully aligned with the Carriage by ensuring full contact between the Ram Alignment Plate and the Carriage.



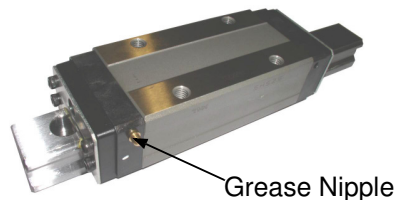
Dis-Assembled

Apply 0.4cc of grease to all four rows of Balls (1.6cc grease in total)

#### **Linear Guides with a Grease Nipple**

Use Kluber - ISOFLEX TOPAZ NCA52 grease or equivalent

Apply 1.6cc (Cubic Centimetres) of grease through the Grease Nipple



For further information regarding this Technical Bulletin please contact either of the contacts below quoting Technical Bulletin Number **TB3400-007**

Note: a complete Library of Technical Bulletins is accessible on the Company Web Site.

CarnaudMetalbox Engineering Limited,  
 Dockfield Road, Shipley,  
 West Yorkshire, BD17 7AY, UK  
 Tel: +44 1274 846200, Fax: +44 1274 846201  
 email: [sales@CMBEcanmaking.com](mailto:sales@CMBEcanmaking.com)

CarnaudMetalbox Engineering Limited,  
 79 Rockland Road, Norwalk,  
 Connecticut 06854, USA  
 Tel: +1 203 853 7325, Fax: +1 203 866 7627  
 email: [sales@CMBEcanmaking.com](mailto:sales@CMBEcanmaking.com)